

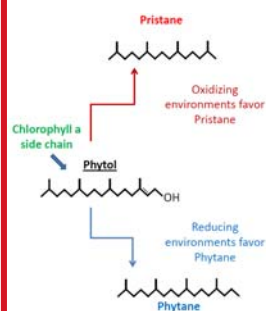
**rmsSEPM**  
Rocky Mountain Section  
Society for Sedimentary Geology



# 2019 RMS-SEPM Brown Bag Luncheon Series

## Geochemistry & Basin Modeling Series

Given by Michael Dolan of Dolan Integration Group



**WHAT IS IT?:** a low cost training seminar led by an industry expert in source rock and hydrocarbon characterization

**WHY SHOULD YOU ATTEND?:** This is a convenient way to learn more about an important topic in the oil and gas industry over lunch hour

**WHO IS INVITED?:** Early, mid or late career geoscientists, reservoir engineers, geophysicists, and people who want to know more about geochemistry and basin modeling

**WHEN/WHERE IS IT?:** Schlumberger Denver Headquarters, 1625 Broadway, Suite 200, Denver, CO 80202

*Class starts at 11:30am and room is available until 1:30p*

**March 18:** Intro to North American Unconventional Geochemical Evaluation

**March 25:** Rock Geochemistry

**April 1:** Gas Geochemistry and Stable Isotopes

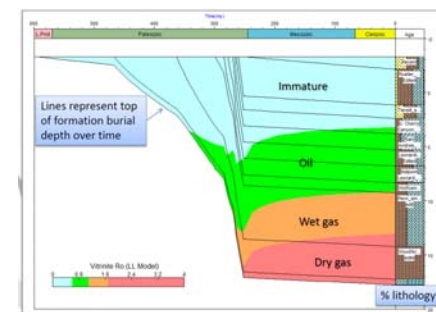
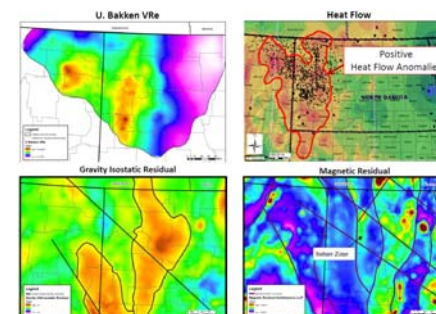
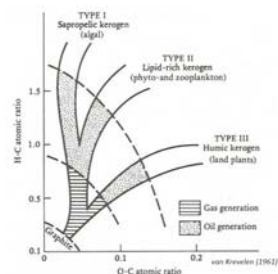
**April 8:** Oil Geochemistry

**April 15:** Basin Modeling

**April 22:** Integration: Geochemistry and Basin Modeling in Unconventional Exploration, Development and Production Evaluations

**HOW MUCH IS IT?:** \$15 per brown bag session, or \$75 if you sign up for the entire 6 lecture series

**HOW DO I SIGN UP?:** Please email Jason Eleson at [jeleson@caerusoilandgas.com](mailto:jeleson@caerusoilandgas.com)



**Hope to see you there!**